

E-CALL: PWD E-Call Button for Holding Point and Handicap Toilet

Todo May2026

- add repeater (PZC-2032)
- add mirror (PZC-Touch)
- Add master-slave panel (support up to 32 (scb) x 32 (slave) = 1024 pts
- Add mimic MCPxxx board



PWD-SCB-TLT-BTN



PWD-SCB-HPT

Parameter	PWD-SCB-TLT-BTN	PWD-SCB-HPT
Description	E-Call button for handicap toilet. No SCB IO board. Must connect	E-Call button for holding point with SCB IO board
Push Button LED	Single colour (RED when activated)	Dual-colour (RED when activated, GREEN when FCC acknowledged)
Alert Sound Loudness	N.A.	85 dBA
Interface	Must connect to SCB IO board (PWD-SCB-IOxx) or PWD-SCB-TLT-LAMP	comBUS
Voltage & Max Current	N.A.	8V to 24V, 35mA when alarm is activated, <10mA in standby
Push Button Mechanical	1M operations, 3 to 5N actuating force, momentary Vandal proof, IP65 rated, 22mm diameter	
Dimensions	Enclosure: 86mm x 86mm, standard UK socket size, 1 gang.	

E-LAMP: PWD Emergency Lamp



PWD-SCB-TLT-LAMP



PWD-SCB-TLT-LSO

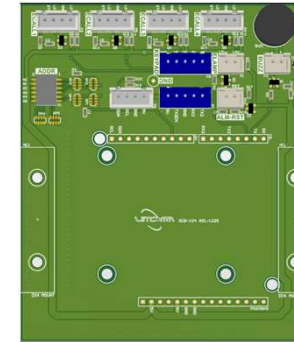
Parameter	PWD-SCB-TLT-LAMP	PWD-SCB-TLT-LS
Description	Emergency lamp with sounder and SCB IO board	Emergency lamp & sounder only, no SCB IO board
Indicator Lens and LED colour	White diffused lens, 45mm diameter, blue LED (default)	
Alert Sound Level	85 dBA	85 dBA
Interface	comBUS	connect to PWD-SCB-IOxx board
Voltage & Max Current	8V to 24V, 70mA when alarm is activated, < 10mA in standby	N.A.
Dimensions	Enclosure: 86mm x 86mm, standard UK socket size, 1 gang.	

E-LAMP: PWD Emergency Lamp

PWD-SCB-TLT-BTN



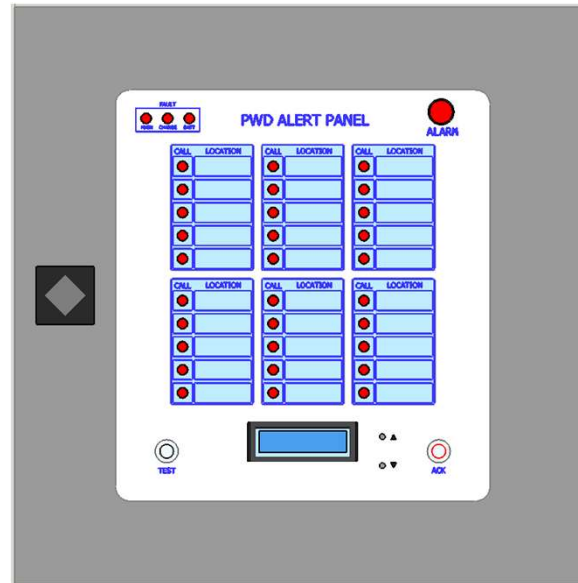
PWD-SCB-TLT



PWD-SCB-IO4-HUB

Parameter	PWD-SCB-TLT	PWD-SCB-HUB4
Description	PWD-SCB-TLT-LAMP and PWD-SCB-TLT-BTN bundle	4-channel SCB hub with flexible routing between E-call button and E-lamp. e.g. 4 to 1, 4 to 4, 1 to 4, 2 to 4 etc
Interface	comBUS	comBUS x 1 PWD-SCB-TLT-BTN interface x 4 PWD-SCB-TLT-LAMP interface x 4
Voltage & Max Current	8V to 24V, 70mA when alarm is activated, < 10mA in standby. comBus powered	8V to 24V, 70mA when alarm is activated, < 10mA in standby. comBus powered
Dimensions	Enclosure: 86mm x 86mm, standard UK socket size, 1 gang.	Enclosure: 150x150x70mm with cable knockouts

Control Panel Selection



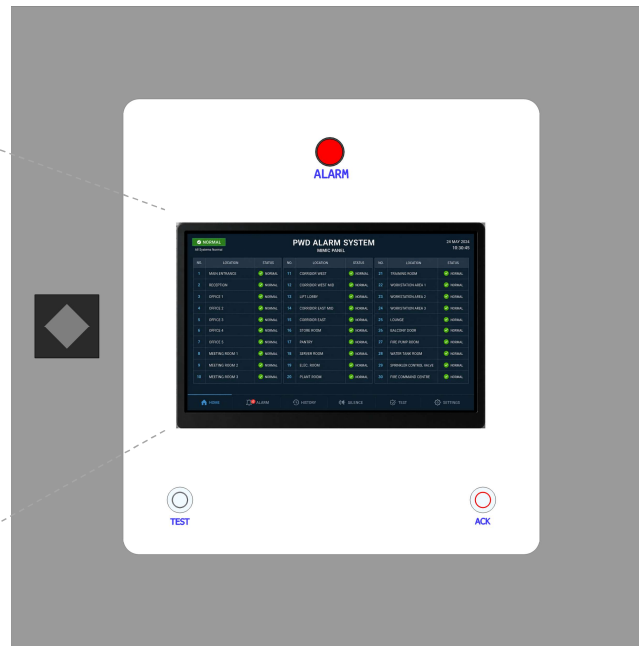
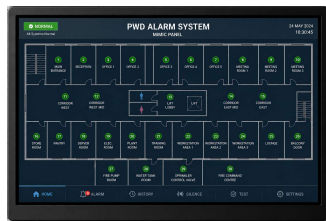
PWD-PZC-MIMIC-20XX



PWD-PZC-2032

Parameter	PWD-PZC-MIMIC-20XX	PWD-PZC-2032
Description	PWD Zone Control Panel with Location LEDs	PWD Zone Control Panel
Number of Call Points	Standard panel: up to 40 pts Custom panel: up to 144 pts	Up to 32 pts
LCD	Show Alarm Location on Display. Name of location is user programmable. Browse Alarm Event History 16x2 Character LCD. RTC Display	
Interfaces	comBUS x 4 to call points (standard). Modbus to BMS (optional)	
Other Features	Power-on self-test, auto call point discovery, lamp test, battery charge status, alert sounder and lamp. Event log memory with timestamp (160 events in standard model)	Power-on self-test, auto call point discovery, alert sounder and lamp. Event log memory with timestamp (160 events in standard model)
Power and Battery	Input: 220 to 240 VAC / 50Hz/60Hz, Output: 24V @ 1A max per loop branch, fused, Battery: 12V 7AH. At least 8 Hrs of battery life in power outage	
Dimensions (LxWxD)	400mm x 400mm, 150mm (standard panel)	300mm x 270mm, 70mm

Control Panel Selection

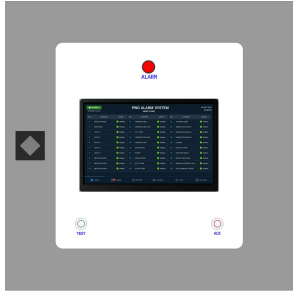


PWD-PZC-MIMIC-TOUCH

Parameter	PWD-PZC-MIMIC-TOUCH
Description	PWD Zone Control Panel with 7" (standard) or 10" Touch Screen
Number of Call Points	Standard panel: up to 40 pts. Custom panel: up to 256 pts
LCD Touch Screen	<ul style="list-style-type: none"> Screen Size and Resolution: 7" 720 x 1280, 10" 800 x 1280 IPS Screen with Optical Bonding Toughened Glass Panel - provides clear image and visual experience. 10-point Multi-Touch
PWD Interfaces	Optical Isolated comBUS x 4 interfaces to call points (standard). Modbus to BMS (optional)
Other Features	<ul style="list-style-type: none"> Real-time clock, SD memory card, RJ45 Ethernet, BLE5, Wifi6, 4-port USB-OTG Event log memory with timestamp (up to 10,000 logs). Exportable to excel file via network. Power-on self-test, auto call point discovery, lamp test, battery charge status Standalone alert sounder and lamp. Dedicated push switch for Test and Ack.
Power and Battery	Input: 220 to 240 VAC / 50Hz/60Hz, Output: 24V @ 1A max per loop branch, fused, Battery: 12V 7AH. At least 8 Hrs of battery life in power outage
Dimensions (LxWxD)	400mm x 400mm, 150mm (standard panel)

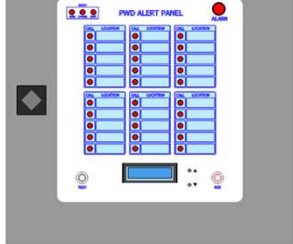
Illustration of PWD System Wiring

PWD-PZC-MIMIC-TOUCH



OR

PWD-PZC-MIMIC-20XX



OR



PWD-PZC-2032

PWD-SCB-TLT



PWD-SCB-HPT



PWD-SCB-HPT



comBUS Loop

comBUS Loop

PWD-SCB-HPT



PWD-SCB-IO4-HUB4



PWD-SCB-TLT-BTN

PWD-SCB-TLT-LSO